

CERTIFICATE OF OWNERSHIP AND DEDICATION

I (WE) HEREBY CERTIFY THAT I (WE) HOLD THE HEREIN SPECIFIED PROPERTY INTEREST IN THE PROPERTY SHOWN AND DESCRIBED HEREON. I (WE) HEREBY DEDICATE TO THE MUNICIPALITY ALL AREAS DETACHED FROM SEASIDE PUBLIC UTILITY EASEMENTS SHEETS HEREON...

OWNER: ALYESKA RESORT DEVELOPMENT, LLC P.O. BOX 249 GIRDWOOD, ALASKA 99587

BY: J. Randall Call
SIGNATURE
PRINTED NAME

President + Vice President of Manager of the Manager

NOTARY ACKNOWLEDGMENT
SUBSCRIBED AND SWORN TO BEFORE ME THIS 14th DAY OF June 2009...

PERSONALLY APPEARED: J. Randall Call
NOTARY PUBLIC: State of Alaska, Alice O. George

BENEFICIARY INTEREST

UNITED WAY OF ANCHORAGE
1057 FIREWED LANE, SUITE 101
ANCHORAGE, ALASKA 99503

SIGNATURE:
TITLE:

PRINTED NAME:

NOTARY ACKNOWLEDGMENT

SUBSCRIBED AND SWORN TO BEFORE ME THIS DAY OF 2009, PURSUANT TO A RESOLUTION OF ITS BOARD OF DIRECTORS...

PERSONALLY APPEARED:

NOTARY PUBLIC:

MY COMMISSION EXPIRES:

ACCEPTANCE OF DEDICATION

THE MUNICIPALITY OF ANCHORAGE HEREBY ACCEPTS THE MUNICIPALITY AND FOR PUBLIC PURPOSES THE REAL PROPERTY SHOWN AND DESCRIBED HEREON...

DATED AT ANCHORAGE, ALASKA, THIS 25th DAY OF August, 2009

Municipal Clerk: [Signature]

SURVEYOR'S CERTIFICATE

I, STANLEY E. PONSNESS, PROFESSIONAL LAND SURVEYOR, DO HEREBY CERTIFY THAT THE PLAT SHOWN HEREON IS A TRUE AND CORRECT REPRESENTATION OF LANDS ACTUALLY SURVEYED...



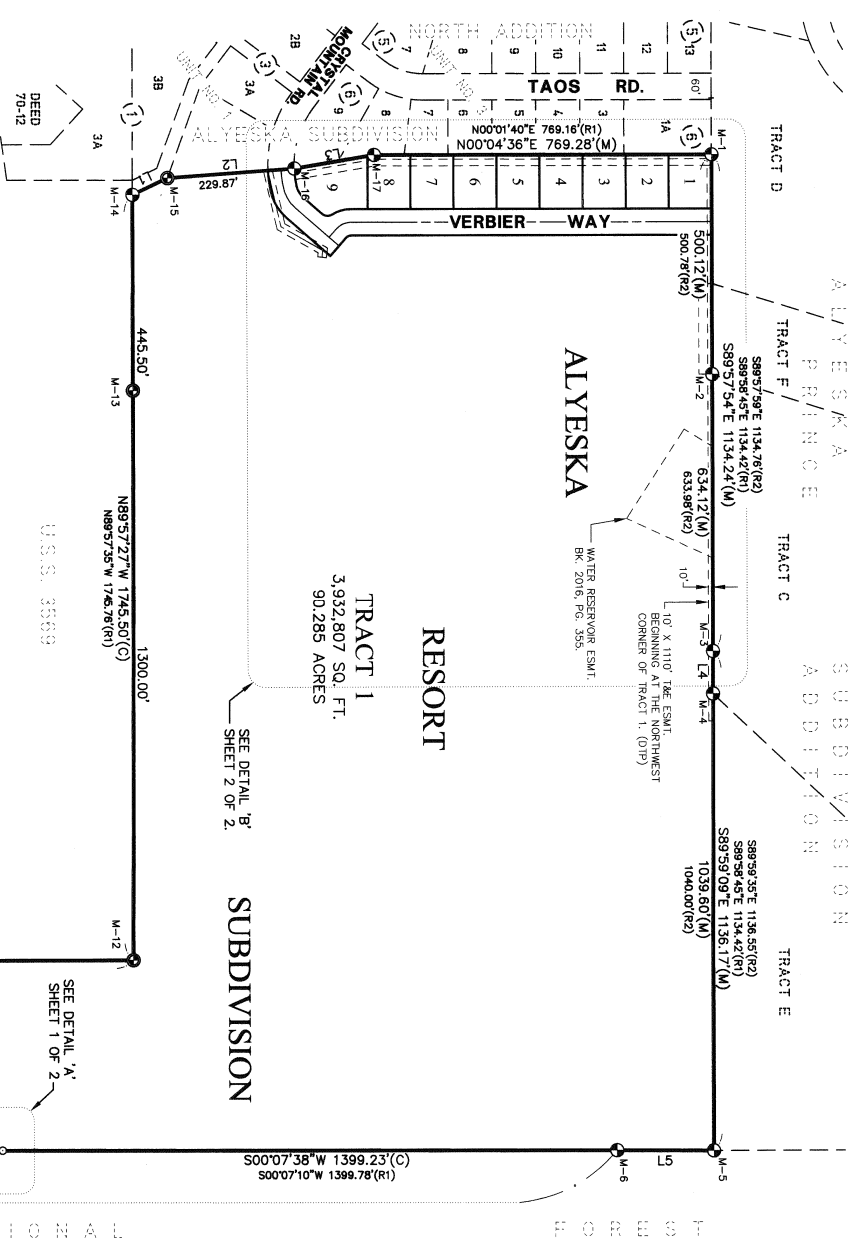
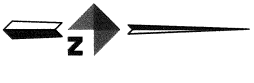
APPROVALS: [Signatures], DATE: 8-11-09

PLAT APPROVAL: AUTHORITY THIS DAY OF August, 2009.

TAX CERTIFICATION

ALL REAL PROPERTY TAXES LEVIED BY THE MUNICIPALITY OF ANCHORAGE ON THE AREA SHOWN ON THIS PLAT...

8-26-09 Date Authorized Official: [Signature]



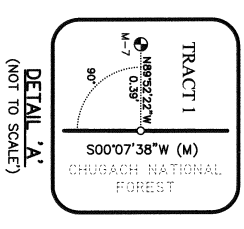
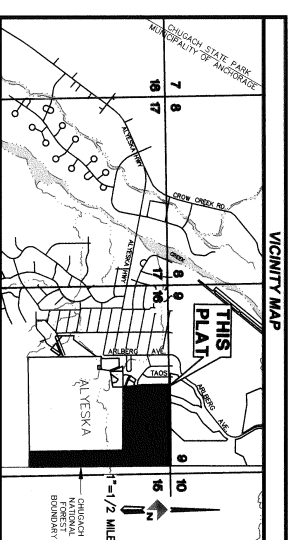
LINE DATA TABLE with columns: LINE, BEARING, LENGTH

NOTES

- 1. ALL FEDERAL AND STATE EASEMENTS/PERMITS/LICENSES REFERENCED BY CASE NUMBERS AND ALL EASEMENTS REFERENCED BY BOOK AND PAGE NUMBERS OR SERIAL NUMBERS WERE CREATED BY DOCUMENTS...

LEGEND

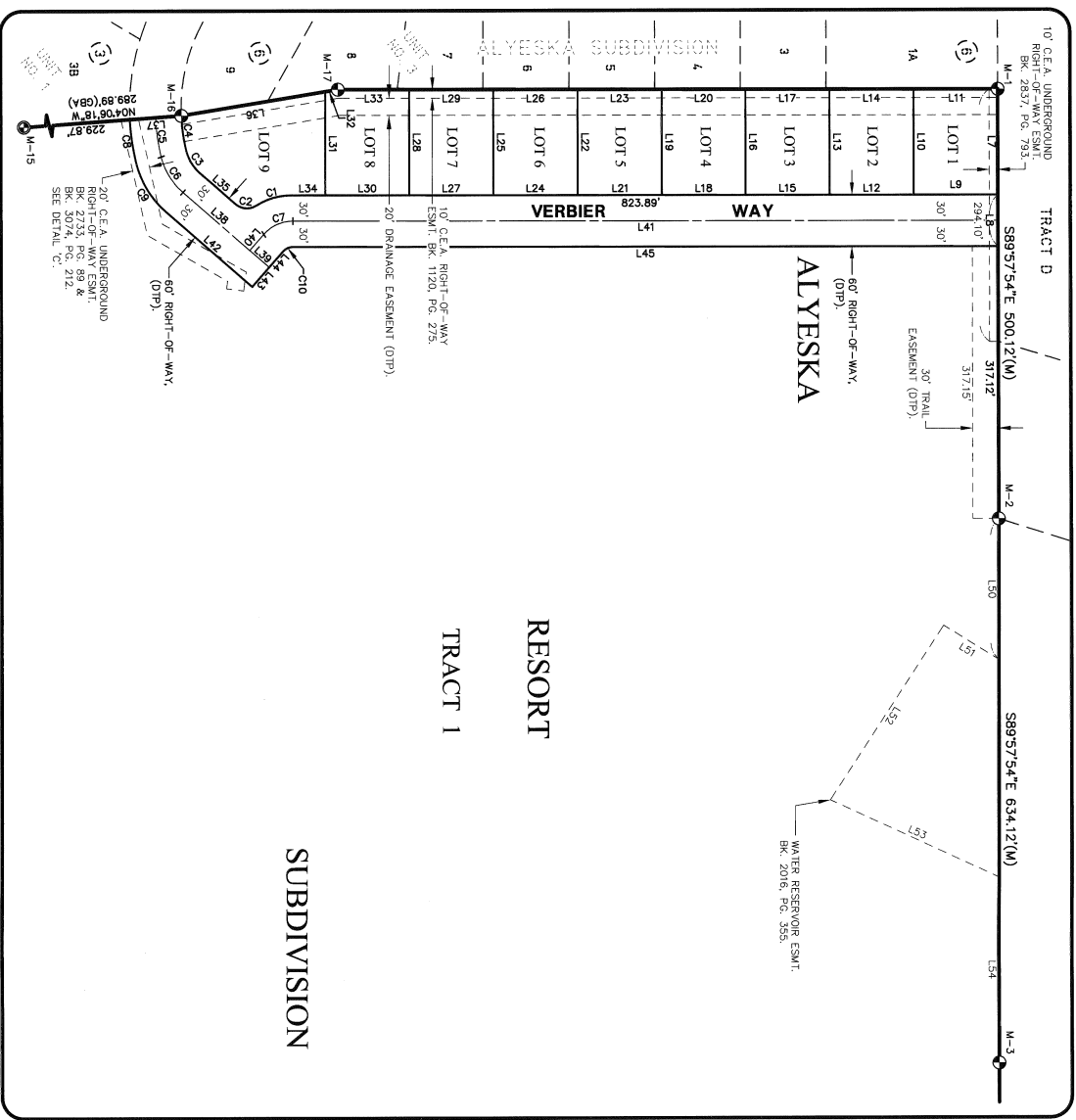
- FOUND MONUMENT AS DESCRIBED. SEE MONUMENT DESCRIPTION DETAILS, SHEET 2 OF 2.
ALUMINUM PIPE FLUSH WITH GRADE WITH DEEP-1 MAGNETS INSERTED WITHIN. SEE MONUMENT DESCRIPTION DETAILS, SHEET 2 OF 2.



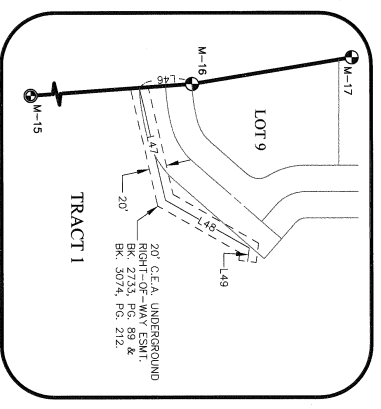
Project information including title 'ALYESKA RESORT SUBDIVISION LOTS 1-9 & TRACT 1', scale '1"=200'', and drawing number '150-25 SHEET 1 OF 2'.

MONUMENT DESCRIPTION DETAILS

M-1	7625-S CS ASNA NO4 1990	FOUND A 3-1/4" DIA. ALUMINUM PIPE MONUMENT STAMPED AS SHOWN, RUST WITH GRADE. GOOD CONDITION. -HELD-
M-2	M-2	FOUND A 3/8" DIA. REBAR 0.1' BELOW GRADE. GOOD CONDITION. -HELD-
M-3	1710-S WP TRAI ASNA NO4 1986	FOUND A 2" DIA. ALUMINUM PIPE MONUMENT STAMPED AS SHOWN, 0.1' BELOW GRADE. GOOD CONDITION. -HELD-
M-4	M-4	FOUND A 3/8" DIA. REBAR 0.1' ABOVE GRADE. GOOD CONDITION. -HELD-
M-5	WC 9 16 10 SC 1971	FOUND A 3" DIA. BRASS CAP MONUMENT STAMPED AS SHOWN, 0.05' BELOW GRADE. GOOD CONDITION. -HELD-
M-6	U.S. DEPT. OF AGRICULTURE NATIONAL SYSTEM OF PUBLIC LANDS BUREAU OF LAND MANAGEMENT 6714-5 2008 M-13	SET A 3-1/4" DIA. ALUMINUM CAP STAMPED AS SHOWN, ON A 2-1/2" DIA. X 30" ALUMINUM PIPE, 0.1' ABOVE GRADE. WITHIN. MAGNETS INSERTED WITHIN.
M-7	U.S. DEPT. OF AGRICULTURE NATIONAL SYSTEM OF PUBLIC LANDS BUREAU OF LAND MANAGEMENT 6714-5 2008 M-15	SET A 3-1/4" DIA. ALUMINUM CAP STAMPED AS SHOWN, ON A 2-1/2" DIA. X 30" ALUMINUM PIPE, 0.1' ABOVE GRADE. WITHIN. MAGNETS INSERTED WITHIN.
M-8	U.S. DEPT. OF AGRICULTURE NATIONAL SYSTEM OF PUBLIC LANDS BUREAU OF LAND MANAGEMENT 6714-5 2008 M-16	SET A 3-1/4" DIA. ALUMINUM CAP STAMPED AS SHOWN, ON A 2-1/2" DIA. X 30" ALUMINUM PIPE, 0.1' ABOVE GRADE. WITHIN. MAGNETS INSERTED WITHIN.
M-9	1710-S TR A1 C1 ASNA NO4 1986	FOUND A 2-1/2" DIA. IRON PIPE MONUMENT STAMPED AS SHOWN, 0.05' BELOW GRADE. GOOD CONDITION. -HELD-
M-10	U.S. DEPT. OF AGRICULTURE NATIONAL SYSTEM OF PUBLIC LANDS BUREAU OF LAND MANAGEMENT 6714-5 2008 M-10	FOUND A 3-1/4" DIA. BRASS CAP STAMPED AS SHOWN, ON A 2-1/2" DIA. X 30" ALUMINUM PIPE, 0.1' ABOVE GRADE. GOOD CONDITION. -HELD-
M-11	1710-S S3569 TRAI NO.4 1986	FOUND A 2-1/2" DIA. ALUMINUM CAP STAMPED AS SHOWN, ON A 2-1/2" DIA. ALUMINUM PIPE 0.1' ABOVE GRADE. -HELD-
M-12	6714-5 2008 M-12	SET A 3-1/4" DIA. ALUMINUM CAP STAMPED AS SHOWN, ON A 2-1/2" DIA. X 30" ALUMINUM PIPE, 0.1' ABOVE GRADE. WITHIN. MAGNETS INSERTED WITHIN.
M-13	6714-5 2008 M-13	SET A 3-1/4" DIA. ALUMINUM CAP STAMPED AS SHOWN, ON A 2-1/2" DIA. X 30" ALUMINUM PIPE, 0.1' ABOVE GRADE. WITHIN. MAGNETS INSERTED WITHIN.
M-14	6714-5 2008 M-14	SET A 3-1/4" DIA. ALUMINUM CAP STAMPED AS SHOWN, ON A 2-1/2" DIA. X 30" ALUMINUM PIPE, 0.1' ABOVE GRADE. WITHIN. MAGNETS INSERTED WITHIN.
M-15	6714-5 2008 M-15	SET A 3-1/4" DIA. ALUMINUM CAP STAMPED AS SHOWN, ON A 2-1/2" DIA. X 30" ALUMINUM PIPE, 0.1' ABOVE GRADE. WITHIN. MAGNETS INSERTED WITHIN.
M-16	6714-5 2008 M-16	SET A 3-1/4" DIA. ALUMINUM CAP STAMPED AS SHOWN, ON A 2-1/2" DIA. X 30" ALUMINUM PIPE, 0.1' ABOVE GRADE. WITHIN. MAGNETS INSERTED WITHIN.
M-17	1710-S C4 TRAI ASNA NO4 1986	FOUND A 2-1/2" DIA. ALUMINUM PIPE MONUMENT STAMPED AS SHOWN, 0.05' BELOW GRADE. GOOD CONDITION. -HELD-



DETAIL 'B'
(SCALE: 1"=100')



DETAIL 'C'
(SCALE: 1"=100')

LOT AREA TABLE

LOT	SQ. FT.	ACRES
1	12,048	0.277
2	12,054	0.277
3	12,054	0.277
4	12,054	0.277
5	12,054	0.277
6	12,054	0.277
7	12,054	0.277
8	12,036	0.276
9	17,066	0.392

RECORDED FILE#
2009-67
DATE: 8-27-09
TIME: 2:04 PM
Requested by: MOA

LINE DATA TABLE

LINE	BEARING	LENGTH
L7	S89°57'54"E	123.00'
L8	S89°57'54"E	60.00'
L9	S00°04'36"W	98.00'
L10	N89°55'24"W	123.00'
L11	N00°04'36"E	97.91'
L12	S00°04'36"W	98.00'
L13	N89°55'24"W	123.00'
L14	N00°04'36"E	98.00'
L15	S00°04'36"W	123.00'
L16	N89°55'24"W	123.00'
L17	N00°04'36"E	98.00'
L18	S00°04'36"W	98.00'
L19	N89°55'24"W	123.00'
L20	N00°04'36"E	98.00'
L21	N89°55'24"W	123.00'
L22	N00°04'36"E	98.00'
L23	N89°55'24"W	123.00'
L24	S00°04'36"W	123.00'
L25	N89°55'24"W	98.00'
L26	N00°04'36"E	98.00'
L27	S00°04'36"W	98.00'
L28	N89°55'24"W	123.00'
L29	N00°04'36"E	98.00'
L30	S00°04'36"W	98.00'
L31	N89°55'24"W	120.56'
L32	N09°23'59"W	14.84'
L33	N00°04'36"E	83.56'
L34	S00°04'36"W	39.89'
L35	N41°09'40"E	53.29'
L36	N09°23'59"W	169.99'
L37	N04°06'18"W	60.02'
L38	N41°09'40"E	103.07'
L39	N41°09'40"E	30.00'
L40	S48°50'20"E	24.94'
L41	N00°04'36"E	821.90'
L42	N41°09'40"E	133.07'
L43	N48°50'20"W	30.00'
L44	N48°50'20"W	24.94'
L45	N00°04'36"E	821.92'
L46	S04°06'18"E	60.02'
L47	N77°01'39"E	131.72'
L48	N29°39'02"E	109.67'
L49	S83°02'56"E	15.48'
L50	S89°57'54"E	164.96'
L51	N31°51'40"E	75.85'
L52	N56°54'14"W	242.28'
L53	S24°44'14"W	216.34'
L54	N89°57'54"W	215.87'

CURVE DATA TABLE

CURVE	DELTA	RADIUS	LENGTH	CHORD	CHORD BEARING
C1	32°47'28"	75.00'	42.92'	42.34'	S16°19'09"E
C2	7°52'33"	20.00'	25.79'	24.04'	N04°13'24"E
C3	35°10'35"	50.00'	30.70'	30.22'	N58°44'58"E
C4	11°13'00"	210.00'	41.11'	41.05'	N81°56'46"E
C5	11°10'33"	240.00'	46.12'	46.04'	N81°50'32"E
C6	35°10'35"	80.00'	49.12'	48.35'	N58°44'58"E
C7	48°54'56"	45.00'	38.42'	37.26'	S24°22'52"E
C8	10°50'57"	270.00'	51.12'	51.04'	N81°44'42"E
C9	35°10'35"	110.00'	67.53'	66.48'	N58°44'58"E
C10	48°54'56"	15.00'	12.81'	12.42'	S24°22'52"E

PLAT OF
ALYESKA RESORT SUBDIVISION
LOTS 1-9 & TRACT 1
A 94.384 ACRE SUBDIVISION OF TRACT A1, UNIT NO. 4,
NORTH ADDITIONAL ALYESKA SUBDIVISION,
PER PLAT NO. 87-98.
LOCATED WITHIN
THE SE 1/4, SECTION 9, & THE E 1/2 OF SECTION 16,
T10N, R12E, SEWARD MERIDIAN, ALASKA.
SITING AND RECORDING DISTRICT
THIRD JUDICIAL DISTRICT, STATE OF ALASKA

DOWL HKM

4041 B STREET, ANCHORAGE, ALASKA 99503 PH: (907) 562-2000 FAX: (907) 565-3653
DWN: LFD CHK: KET W.O. D59810C DOWL FILE NO:
SCALE: 1"=200' FB: 2000, 2008, 2228 GRD: & S-917
DRAWN: MAY-18-2009 SURVEYED: JUN-AUG, 2008
C-P: PNT-00098494 MOA CASE FILE: S-11640-1 **SHEET 2 OF 2**